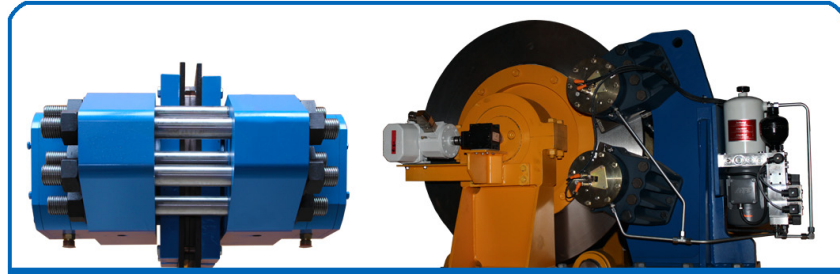
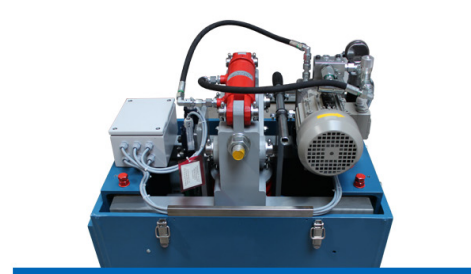




Brakes (Drum- and Disc brakes)

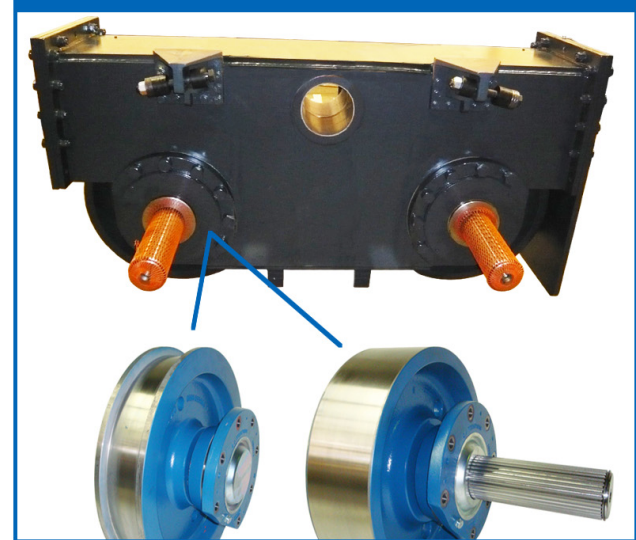


Safety catch brake systems

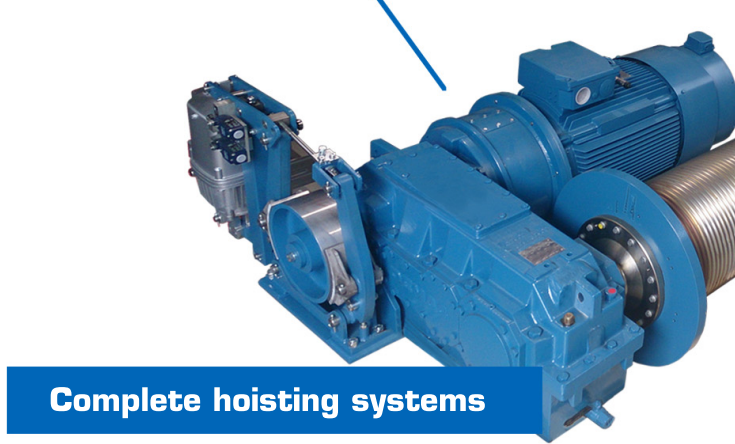


Rail clamps

Complete end carriages



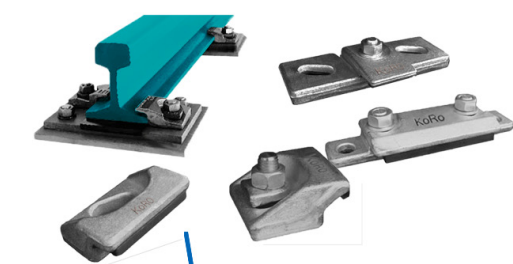
Crane wheels (d=160 - 1200mm)



Complete hoisting systems

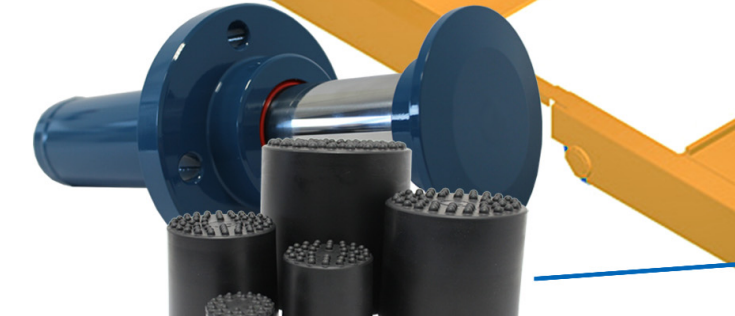


Rope sheaves (d=100 - 2000mm)



Rails and clamps

Hooks and complete suspensions



End stops (hydraulic, cellular and rubber)



Bottom blocks (Standard and motorized)

